

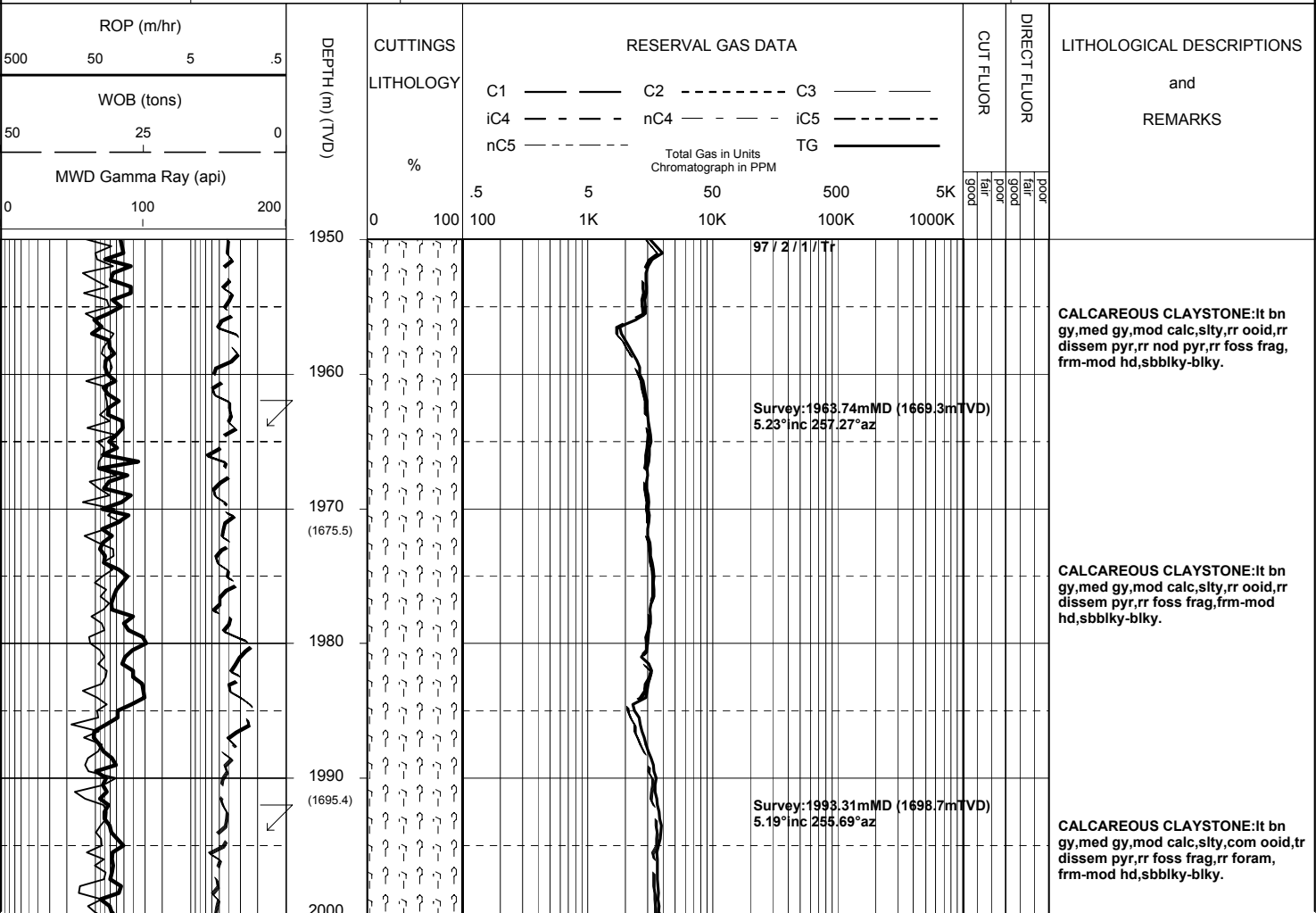
MASTERLOG

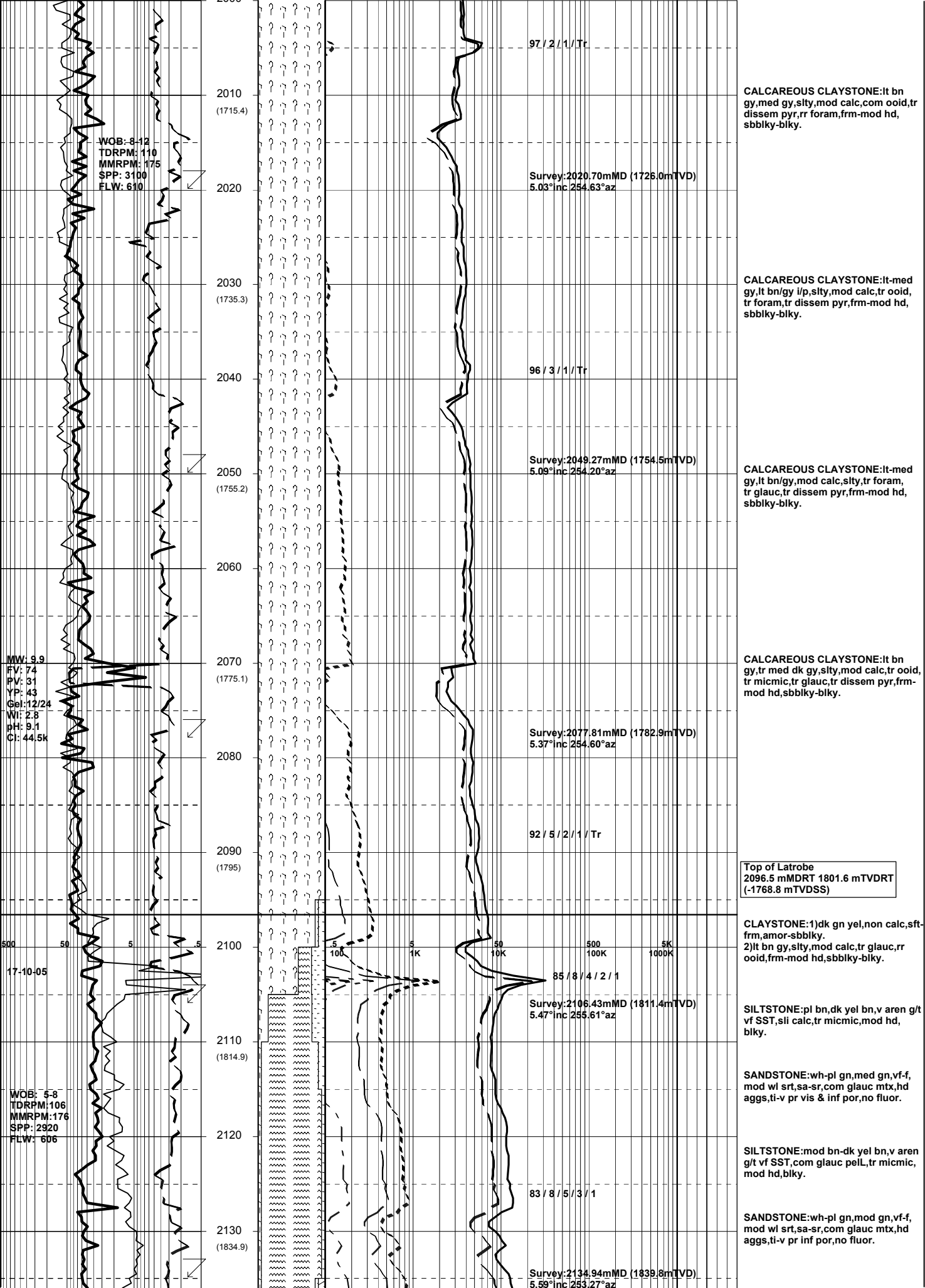
BMA A20A



GENERAL	POSITION	HOLE / CASING INFO	DATE / DEPTH	ENGINEERS
Country : AUSTRALIA	GDA Co-ord X : 147 46 20.056 E	8-1/2" Hole to	Spud Date : 14-10-2005	Mark Smith V.B. Jagarlamudi Steve Oades
Permit : VIC L13	GDA Co-ord Y : 38 29 58.899 S		Total Depth Date :	
Field : Bream	MGA Co-ord X : 567338.25mE	10-3/4" Surface Csg at 1123.0 mMDRT	Total Depth :	
Basin : GIPPSLAND	MGA Co-ord Y : 5738458.02mN		True Vertical Depth :	
Well Type : DEVELOPMENT	RT to MSL : 32.82 m	7" Production Csg at	Log Scale : 1/ 500	
Rig Name : NABORS 453	RT to Sea Bed : 92.22 m			

ABBREVIATIONS	LITHOLOGY LEGEND	ENGINEERING LEGEND
MW Mud Weight WOB Weight on Bit (klbs) RV Funnel Viscosity RPM Rotations Per Min PV Plastic Viscosity FLW Flow Rate (gpm) YP Yield Point SPP Pump Pressure (psi) Gel Gel Strength RR Re-Run Bit WL Water Loss TG Trip Gas KCl Potassium Chloride CG Connection Gas Cl Chlorides BG Background Gas Incl Inclination DGP Drilled Gas Peak Az Azimuth MM Mud Motor	CLAYSTONE SILTSTONE SST: F - V FINE SST: MEDIUM SST: COARSE SHALE MARL LIMESTONE DOLOMITE CHERT CONGLOMERATE COAL BRYOZOA RADIOLARITES ECHINOIDS CORALS FORAMINIFERA LITHIC FRAGMENT	CARB FRAGMENT QUARTZITE INTRUSIVES GLAUCONITE PYRITE CEMENT CASING SHOE LINER HANGER BIT CHANGE DEVIATION SURVEY SWC UNRECOVERED SIDEWALL CORE WIRELINE LOGS MDT POINTS: PRESSURE ONLY SAMPLE SEAL FAILURE TIGHT





WOB: 6-42
 TDRPM: 110
 MMRPM: 175
 SPP: 3100
 FLW: 610

Survey: 2020.70mMD (1726.0mTVD)
 5.03° inc 254.63° az

CALCAREOUS CLAYSTONE: It bn gy, med gy, slty, mod calc, com ooid, tr disse pyr, rr foram, frm-mod hd, sbbiky-biky.

WOB: 6-42
 TDRPM: 110
 MMRPM: 175
 SPP: 3100
 FLW: 610

Survey: 2049.27mMD (1754.5mTVD)
 5.09° inc 254.20° az

CALCAREOUS CLAYSTONE: It-med gy, It bn/gy i/p, slty, mod calc, tr ooid, tr foram, tr disse pyr, frm-mod hd, sbbiky-biky.

MW: 9.9
 FV: 74
 PV: 31
 YP: 43
 Gel: 12/24
 Wt: 2.8
 pH: 9.1
 Cl: 44.5k

Survey: 2077.81mMD (1782.9mTVD)
 5.37° inc 254.60° az

CALCAREOUS CLAYSTONE: It bn gy, tr med dk gy, slty, mod calc, tr ooid, tr micmic, tr glauc, tr disse pyr, frm-mod hd, sbbiky-biky.

Top of Latrobe
 2096.5 mMDRT 1801.6 mTVDRT
 (-1768.8 mTVDSS)

WOB: 5-8
 TDRPM: 106
 MMRPM: 176
 SPP: 2920
 FLW: 606

Survey: 2106.43mMD (1811.4mTVD)
 5.47° inc 255.61° az

CLAYSTONE: 1) dk gn yel, non calc, stf-frm, amor-sbbiky.
 2) It bn gy, slty, mod calc, tr glauc, rr ooid, frm-mod hd, sbbiky-biky.

SILTSTONE: pl bn, dk yel bn, v aren g/t vf SST, sli calc, tr micmic, mod hd, blkly.

SANDSTONE: wh-pl gn, med gn, vf-f, mod wl srt, sa-sr, com glauc mtx, hd aggs, ti-v pr vis & inf por, no fluor.

SILTSTONE: mod bn-dk yel bn, v aren g/t vf SST, com glauc peL, tr micmic, mod hd, blkly.

SANDSTONE: wh-pl gn, mod gn, vf-f, mod wl srt, sa-sr, com glauc mtx, hd aggs, ti-v pr inf por, no fluor.

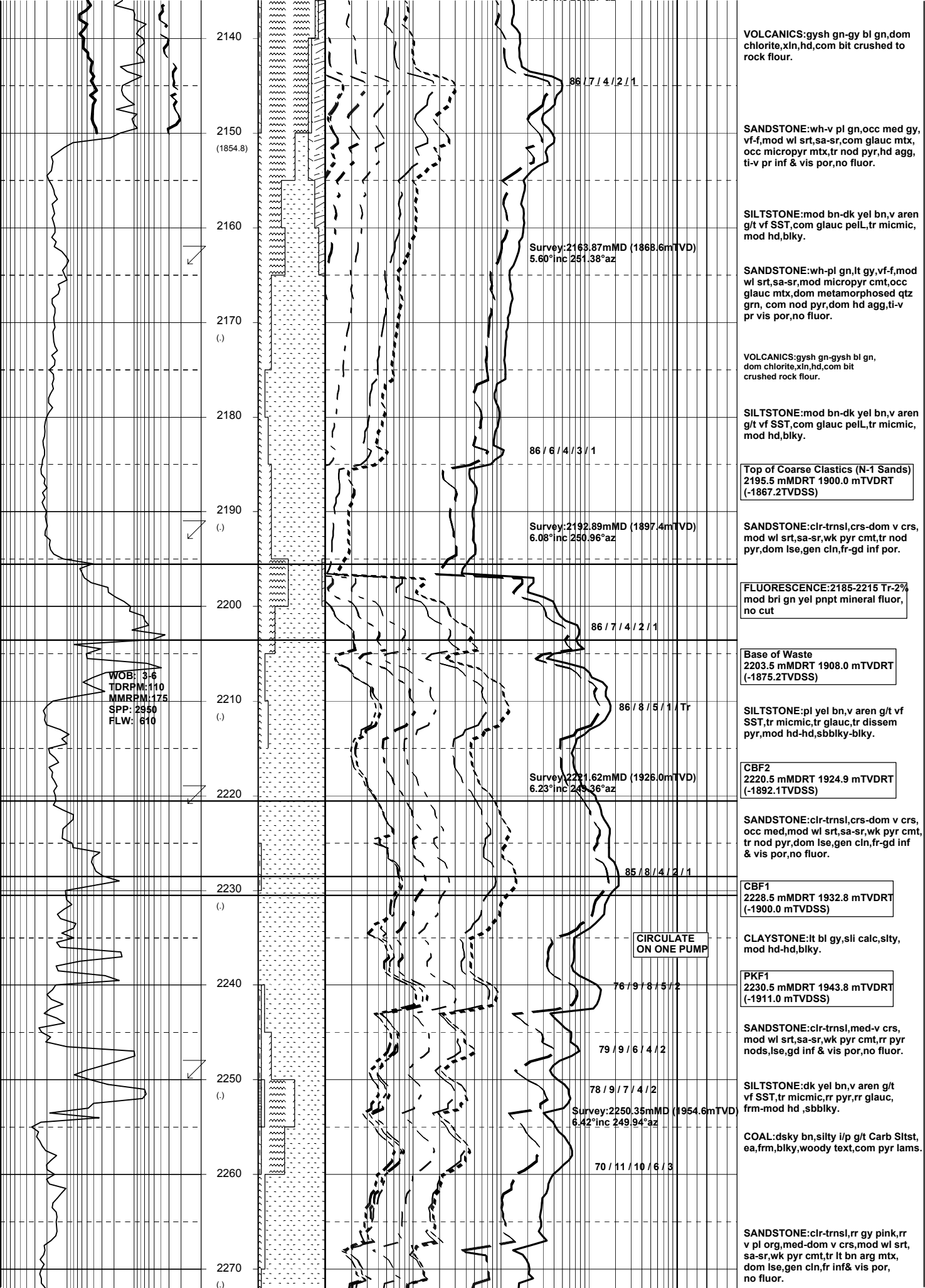
Survey: 2134.94mMD (1839.8mTVD)
 5.59° inc 253.27° az



17-10-05

85 / 8 / 4 / 2 / 1

83 / 8 / 5 / 3 / 1



2140
2150 (1854.8)
2160
2170 ()
2180
2190 ()
2200
2210 ()
2220
2230 ()
2240
2250 ()
2260
2270 ()

WOB: 3-6
TDRPM: 110
MMRPM: 175
SPP: 2950
FLW: 610

Survey: 2163.87mMD (1868.6mTVD)
5.60° inc 251.38° az

Survey: 2192.89mMD (1897.4mTVD)
6.08° inc 250.96° az

Survey: 2221.62mMD (1926.0mTVD)
6.23° inc 249.36° az

Survey: 2250.35mMD (1954.6mTVD)
6.42° inc 249.94° az

CIRCULATE
ON ONE PUMP

VOLCANICS: gysh gn-gy bl gn, dom chlorite, xln, hd, com bit crushed to rock flour.

SANDSTONE: wh-v pl gn, occ med gy, vf-f, mod wl srt, sa-sr, com glauc mtx, occ micropyr mtx, tr nod pyr, hd agg, ti-v pr inf & vis por, no fluor.

SILTSTONE: mod bn-dk yel bn, v aren g/t vf SST, com glauc peL, tr micmic, mod hd, blkly.

SANDSTONE: wh-pl gn, lt gy, vf-f, mod wl srt, sa-sr, mod micropyr cmt, occ glauc mtx, dom metamorphosed qtz grn, com nod pyr, dom hd agg, ti-v pr vis por, no fluor.

VOLCANICS: gysh gn-gysh bl gn, dom chlorite, xln, hd, com bit crushed rock flour.

SILTSTONE: mod bn-dk yel bn, v aren g/t vf SST, com glauc peL, tr micmic, mod hd, blkly.

Top of Coarse Clastics (N-1 Sands)
2195.5 mMDRT 1900.0 mTVDRT
(-1867.2TVDSS)

SANDSTONE: clr-trnsI, crs-dom v crs, mod wl srt, sa-sr, wk pyr cmt, tr nod pyr, dom lse, gen cIn, fr-gd inf por.

FLUORESCENCE: 2185-2215 Tr-2% mod bri gn yel pnpt mineral flour, no cut

Base of Waste
2203.5 mMDRT 1908.0 mTVDRT
(-1875.2TVDSS)

SILTSTONE: pl yel bn, v aren g/t vf SST, tr micmic, tr glauc, tr dissem pyr, mod hd-hd, sbbkly-blky.

CBF2
2220.5 mMDRT 1924.9 mTVDRT
(-1892.1TVDSS)

SANDSTONE: clr-trnsI, crs-dom v crs, occ med, mod wl srt, sa-sr, wk pyr cmt, tr nod pyr, dom lse, gen cIn, fr-gd inf & vis por, no fluor.

CBF1
2228.5 mMDRT 1932.8 mTVDRT
(-1900.0 mTVDSS)

CLAYSTONE: lt bl gy, sli calc, sity, mod hd-hd, blkly.

PKF1
2230.5 mMDRT 1943.8 mTVDRT
(-1911.0 mTVDSS)

SANDSTONE: clr-trnsI, med-v crs, mod wl srt, sa-sr, wk pyr cmt, rr pyr nods, lse, gd inf & vis por, no fluor.

SILTSTONE: dk yel bn, v aren g/t vf SST, tr micmic, rr pyr, rr glauc, frm-mod hd, sbbkly.

COAL: dsky bn, silty i/p g/t Carb Stst, ea, frm, blkly, woody text, com pyr lams.

SANDSTONE: clr-trnsI, rr gy pink, rr v pl org, med-dom v crs, mod wl srt, sa-sr, wk pyr cmt, tr lt bn arg mtx, dom lse, gen cIn, fr inf & vis por, no fluor.

86 / 7 / 4 / 2 / 1

86 / 6 / 4 / 3 / 1

86 / 7 / 4 / 2 / 1

86 / 8 / 5 / 1 / Tr

85 / 8 / 4 / 2 / 1

76 / 9 / 6 / 5 / 2

79 / 9 / 6 / 4 / 2

78 / 9 / 7 / 4 / 2

70 / 11 / 10 / 6 / 3

